



GeoForms

a portfolio of significant
plastic formwork projects

2007

GeoForms plastic concrete formwork



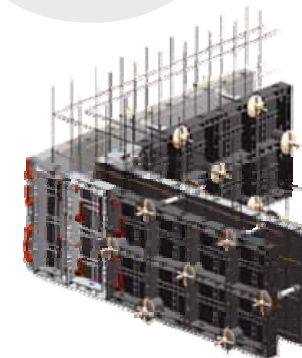
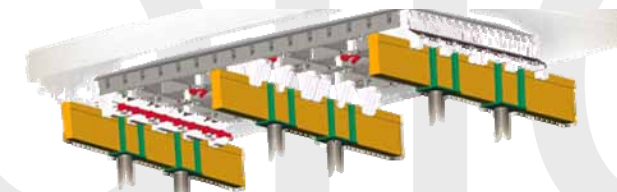
Round-, square- and rectangular Columns, as well as walls and slabs are possible with the **GeoTub**, **GeoPanel**, and **GeoSky** forms.

GeoForms are made of UV-stabilized regenerated ABS plastic. Lightweight and tough, they can be used at least **100 times** before needing replacing.

- **No releasing agent required**
- **Just clean with water after stripping**
- **No oil necessary**
- **Very fast, easy and strong handles hold the forms together**



GeoTub round and square column forms



*GeoPanel wall system and
GeoSky slab
Modular concrete formwork system*

GeoForms plastic concrete formwork



Salavat, Russia



Construction of an office block.
Light and tough, the Geoplast formworks don't require a crane to erect the columns.



GeoForms plastic concrete formwork



South Tyrol, Italy



Construction of an office block.

The Geoplast Geotub Panel forms were chosen as a complement to large iron and plywood wall forms thanks to the low weight and ease of use, completely avoiding the use of timber for the columns.



GeoForms plastic concrete formwork



Riga, Latvia



The Geotub forms are extremely stable, usable in a temperature range from -22°F to +160°F (-30°C to +70°C), which make them ideal for use in northern continental as well as hot climates.

Algeria



GeoForms plastic concrete formwork



Toronto, Canada



Construction of an office block.

The forms are easy and quick to assemble. Pouring can be done by pump or gravity; the concrete can be vibrated to obtain a high-quality surface finish.



GeoForms plastic concrete formwork



Red Cow Roundabout, Dublin, Ireland



Bridge pillars, Geotub dia . 60 cm - The busiest roundabout in Ireland needs to expand its capacity to accommodate for Dublin's growing traffic, along with other 100 bridges in the city's highway system. The system was chosen as it's light and no need for a crane means minimal traffic disruption.



GeoForms plastic concrete formwork



Lisbon, Portugal



Square columns for a new shopping mall, 6 meters tall, one single pour.
Geotub Pannello was used for this project.



GeoForms plastic concrete formwork



Figueira da Foz, Portugal



Within the possibilities of the Geoforms system is the combination of Geotub and Geopanel to make Semi-oval pillars. In this specific case a Geotub 40 was combined with a Geopanel 25. In this case some reworking of the surface may be required.



GeoForms plastic concrete formwork



Cervarere, Italy



Construction of a residential home: the Geopanel wall form system is faster to erect than the traditional methods. The wall thickness goes from 6" to 16" (15 to 40 cm). Geoplast offers free technical assistance to reckon the most cost-effective panel combination.



GeoForms plastic concrete formwork



Ufa, Russia



Construction of the new football (soccer) stadium.
The Geopanel system offers immense flexibility of use in the most diverse situations.



GeoForms plastic concrete formwork



Brescia, Italy



Renovation of a 16th century villa.

Easy, fast and flexible to erect, the low weight of the system makes it very suitable for small work teams.



GeoForms plastic concrete formwork



Brescia, Italy



Renovation of a 16th century villa.

Less cumbersome than metal panels, the Geopanel system increases the on-site safety thanks to its low weight.



GeoForms plastic concrete formwork



Brescia, Italy



Renovation of a 16th century villa.

Large sections can be moved with a crane and put straight back into use after stripping and washing, with very fast turn-around time.



GeoForms plastic concrete formwork



Brescia, Italy



Renovation of a 16th century villa.

The Geoplast forms can be washed with water, or, for additional turn-around speed on larger surfaces, with releasing agents.



GeoForms plastic concrete formwork



Brescia, Italy

Windows can be easily made already in place in the wall.



GeoForms plastic concrete formwork



Romania



Earthquake-resistant foundations, 1 meter thickness.



GeoForms plastic concrete formwork



Belgorod, Russia



New residential building, Geosky is used to pour the slab, the same Geopanel used to pour the walls of the Building.



GeoForms plastic concrete formwork



Jasi, Romania



Structure entirely built using GEOPLAST formwork: GEOTUB for the square and round columns and GEOSKY for the advanced-stripping slab.



GeoForms plastic concrete formwork

Suceava, Romania



Slab and beam poured monolithically.
Compensating with timber it's possible to make beams of any size.



GeoForms plastic concrete formwork



Grantorto, Italy



Construction of the new GEOPLAST HQ building.
All Geoplast forms were used during the construction of the building.



GeoForms plastic concrete formwork



Grantorto, Italy



Construction of the new GEOPLAST HQ building.
Fast, light, cost-effective and reliable, the system was field-tested by Geoplast.

